

High Pressure
High Temperature
Nuclear Power Plants



VALVES *for*
CRITICAL
APPLICATIONS

www.vastas.com



Highest quality in product
highest safety at facility

 **VASTAS**
VALVES & ACTUATORS

AT A GLANCE

MISSION & VISION

Vastas is a Turkish company that designs, manufactures and repairs valves and actuators. It is mostly active in Gulf Countries & Turkic Republics. As one of the leading valve companies in Oil & Gas Pipelines, it is aligned at top 5 manufacturers in Europe for Valve & Actuator Combined System.

Establishment

1945

► ***Location***

Turkey

► ***Capacity***

11.000 tons/year

► ***Personnel***

250+

► ***Focus***

Pipeline Valves

► ***Product Line***

Gate, Ball, Check, Globe, Plug Valves & Actuators

► ***Primary Industries***

Oil & Gas

Refining & Petrochemicals

Energy

High Pressure Water

Our Vision

We aim to become one of the leading global brands, manufacturing industrial valve & actuators.

Our Mission

With our commitment to future generations; our mission is to ensure a sustainable environment for all living kinds and update our values for the society.

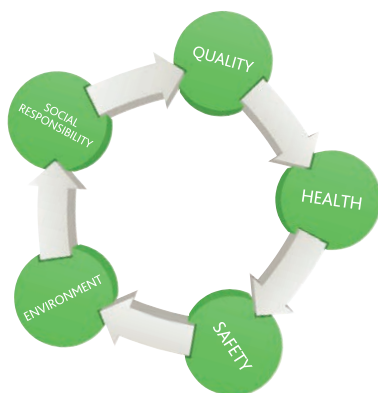
Our Policy

Vastas's Policy is to create optimum value from what is spend. To reward the time and men-power spent. To ensure the sustainability of the natural sources spent, to invest in the future of the community and environment.

As one of the first integrated management system builder in Turkey, Vastas was awarded with ISO 9001, ISO 14001, ISO 45001 certificates. Now we aim to comply with SA8000's requirements and bring this standard to valve industry and its subcontractors in Turkey.

Our Values

- Sustainable Life for All
- Transparency
- To bear yesterdays responsibility
- Be the best of today
- Serve the product of tomorrow
- Continuous development of quality
- Customer-focused services



Here are five major rings of the chain that will carry us to the future;

- Quality
- Health
- Safety
- Environment
- Social Responsibility

CERTIFICATES

- ISO 9001 (*since 1997*)
- ISO 14001 (*since 2003*)
- ISO 45001 (*since 2003*)
- CE (*since 2002*)
- API 6D (*since 2003*)
- API 600 (*since 2006*)
- API 6A (*since 2012*)
- API 602 (*since 2012*)
- ASME U (*since 2016*)
- NACE (*since 2010*)
- ATEX (*since 2010*)
- SIL 2-3 (*since 2015*)

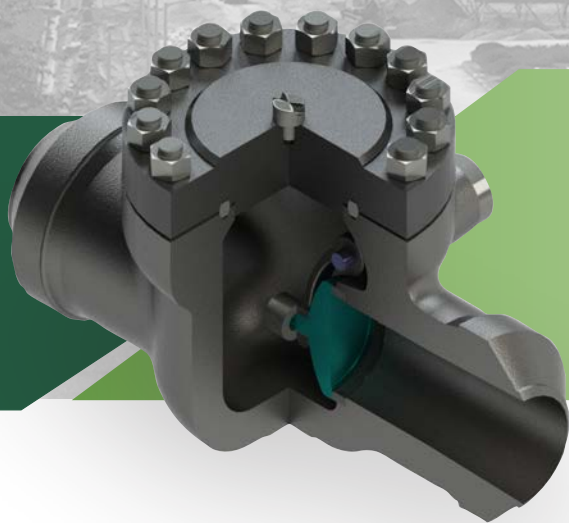
Planned:

- ASME N
- NQA-1
- NPT
- NB-NR
- NV
- OIT

PRODUCT LINE *for* NUCLEAR POWER PLANTS

CHECK VALVES

Swing Check Type



Design Standards

ASME Section III ASME B16.34 /NP-068-05

Sizes

2" - 48" (DN 50-1200)

Pressure Class

150 - 2500 / (PN(Mpa) 1,0-42)

Applications

Steam, Saltwater, Waste Water, Potable
& Drinking Water, Oil, Sour Natural Gas

FEATURES

The flow diameter of the monoblock body has same value as that of the nominal diameter. The lowest rate of pressure drop has been attained only with this type of body design. The disc opens completely parallel to the flow direction, to maintain smooth flow. It is designed to resist shocks and vibrations. The seat face is flat. The disc arm is fit into the body by means of a pin, to enable easy operation, without being affected by the flowing fluid.

BODY Forged Steel, Casting Steel

MATERIALS Carbon Steels
Alloy Steels
Stainless Steels

COVER SEAL DESIGNS Bolted Bonnet, Pressure Seal Body / Cover Joint

CONNECTION Flanged, Welded

OPTIONS Position indication
Seal weld (bolted bonnet)
Lock open position

CHECK VALVES

Dual Disc Type

| | |
|------------------|--|
| Design Standards | ASME Section III ASME B16.34/NP-068-05 |
| Sizes | 2" - 48" (DN 50-1200) |
| Pressure Class | 150 - 2500/(PN(Mpa) 1,0-42) |
| Applications | Steam, Saltwater, Waste Water, Potable & Drinking Water, Oil, Sour Natural Gas |



FEATURES

The Dual Disc Check Valve is designed to open fully to provide flow in the forward direction and close rapidly upon flow reversal. and designed to prevent reverse flow automatically. On pump start-up, the flow of water enters the valve from the seat end (in Figure 1) and forces the two discs open until they strike the disc stop pin. On pump shut-down, valve closes with help of the torsion springs.

BODY Forged Steel, Casting Steel

MATERIALS Carbon Steels
Alloy Steels
Stainless Steels

Nozzle Check Valves



Design Standards

Sizes

Pressure Class

Applications

ASME Section III ASME B16.34 /NP-068-05

2" - 48" (DN 50-1200)

150 - 2500/(PN(Mpa) 1,0-42)

Steam, Saltwater, Waste Water, Potable
& Drinking Water, Oil, Sour Natural Gas

FEATURES

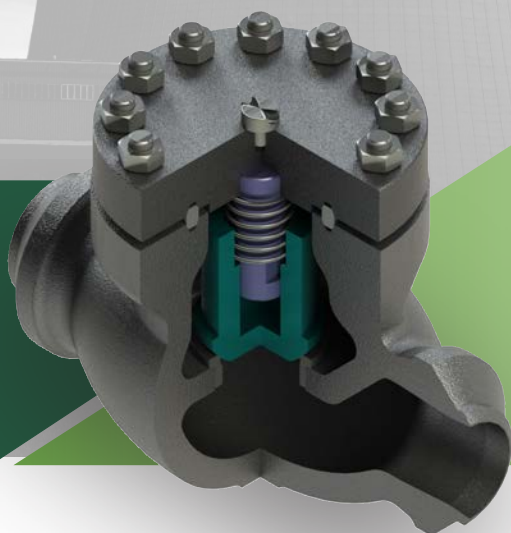
Nozzle check valve is designed to meet the criteria of conventional check valves by allowing forward flow under normal conditions, opening easily, firmly backseating at low velocity and closing on reverse flow with minimal seat leakage.

BODY Casting Steel

MATERIALS Carbon Steels
Alloy Steels
Stainless Steels

CHECK VALVES

Lift Type



Design Standards

ASME Section III ASME B16.34/NP-068-05

Sizes

1/2" - 48" (DN 15-1200)

Pressure Class

150 - 2500 / (PN(Mpa) 1,0-42)

Applications

Steam, Saltwater, Waste Water, Potable & Drinking Water, Oil, Sour Natural Gas

FEATURES

- Available in 'T' pattern configuration
- One piece poppet design with hardfacing on guide surfaces
- Valves sized on seat bore to ensure full lift in open position
- Lift Check valves may be equipped with equalizer lines to vent the bonnet area above the disk and eliminate any dash-pot effect during rapid operation

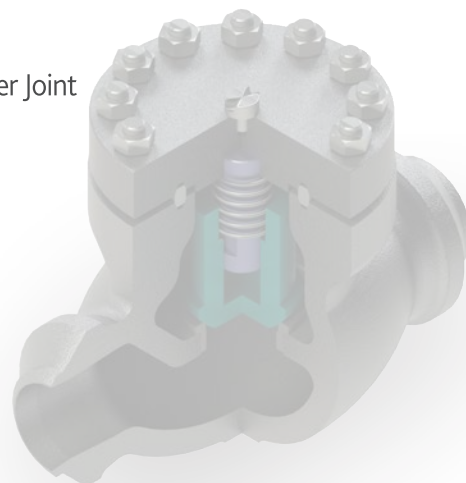
BODY Forged Steel, Casting Steel

MATERIALS Carbon Steels
Alloy Steels
Stainless Steels

COVER SEAL DESIGNS Bolted Bonnet, Pressure Seal Body / Cover Joint

CONNECTION Flanged, Welded

OPTIONS Seal weld (bolted bonnet)



GATE VALVES

Flexible Wedge Design

Design Standards

ASME Section III ASME B16.34 / NP-068-05

Sizes

2" - 100" (DN 50-2500)

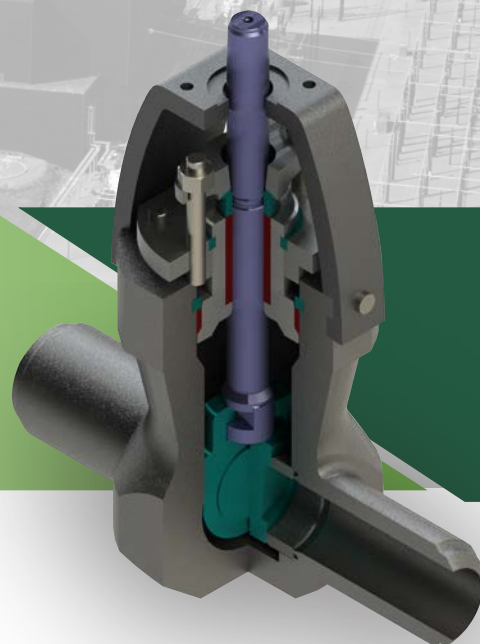
Pressure Class

150 - 2500 / (PN(Mpa) 1,0-42)

ApplicationsSteam, Saltwater, Waste Water, Potable
& Drinking Water, Oil, Sour Natural Gas

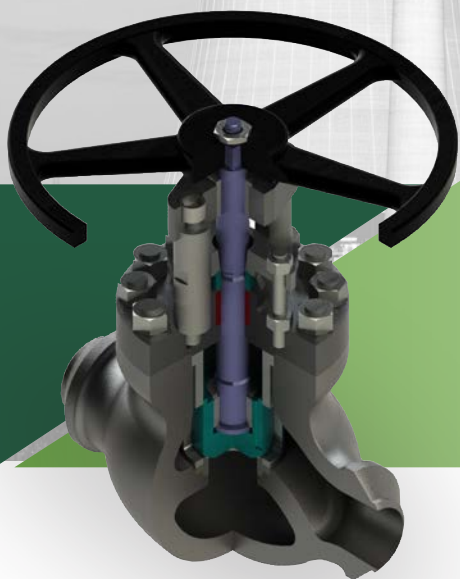
FEATURES

- Flexible wedge design
- Bi-directional operation
- Tight shut-off

BODY Forged Steel, Casting Steel**MATERIALS** Carbon Steels
Alloy Steels
Stainless Steels**SEAT & WEDGE** Hardfaced with stellite or cobalt free materials.**COVER SEAL DESIGNS** Bolted Bonnet
Pressure Seal Body / Cover Joint**OPTIONS** Pneumatic
Electric Motor
Gas-Hydraulic
Manual Gear
Bare Stem**OTHER OPTIONS** Position indication
Bonnet overpressure protection
Seal weld (bolted bonnet)
Integral bypass arrangements / option
Instrumented stem**CONNECTION** Flanged, Welded

CONTROL VALVES

Globe Type



Design Standards

ASME Section III ASME B16.34/NP-068-05

Sizes

2" - 36" (DN 50-900)

Pressure Class

150 - 2500/(PN(Mpa) 1,0-42)

Applications

Process Control

FEATURES

- Single and multi stage pressure drop
- Severe service trims
- Stable cage guiding

BODY Forged Steel, Casting Steel

COVER SEAL DESIGNS

Bolted Bonnet
Pressure Seal Body / Cover Joint

CONNECTION

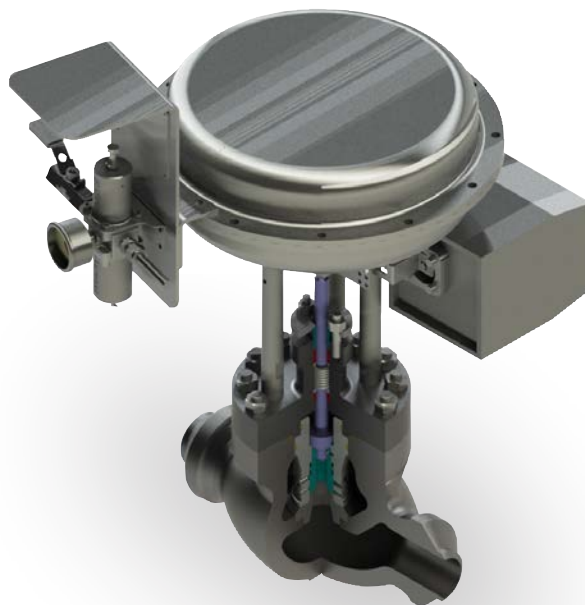
Flanged, Welded

MATERIALS

Carbon Steels
Alloy Steels
Stainless Steels

OPTIONS

Pneumatic
Electric Motor
Hydraulic



Top Entry Design

Design Standards

ASME Section III ASME B16.34 /NP-068-05

Sizes

1/2" - 48" (DN 15-1200)

Pressure Class

150 - 2500 / (PN(Mpa) 1,0-42)

Applications

Steam, Saltwater, Waste Water, Potable & Drinking Water, Oil, Sour Natural Gas

FEATURES

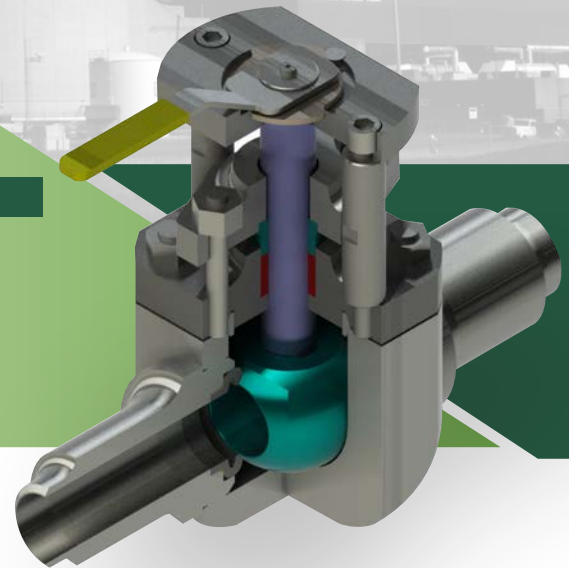
It is possible to remove the bonnet of the Top-entry valve allowing free access to the body cavity without dismantling the valve from the line. A set of special maintenance tools permits to take out both ball and seat-rings; this maintenance operation requires very little space around the valve, thus allowing it in areas where space is a limiting factor.

BODY Forged Steel, Casting Steel

SEAT DESIGN Soft Seated, Metal to Metal Seated

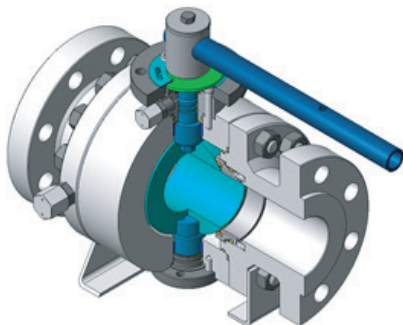
MATERIALS Carbon Steels
Alloy Steels
Stainless Steels

OPTIONS Pneumatic, Electric Motor, Gas-Hydraulic, Manual Gear, Bare Stem



CONNECTION Flanged, Welded

Side Entry Design



FEATURES

- Operational easiness by quarter turn motion
- Laminar flow within through conduit design
- Applicable maintenance by field service
- Suitable for underground services

Design Standards

ASME Section III, ASME B16.34 /NP-068-05

Sizes

1/2" - 56" (DN 15-1400)

Pressure Class

150 - 2500 / (PN(Mpa) 1,0-42)

Applications

Steam, Saltwater, Waste Water, Potable & Drinking Water, Oil, Sour Natural Gas

BODY Forged Steel, Casting Steel

SEAT DESIGN Soft Seated, Metal to Metal Seated

CONNECTION Flanged, Welded

OPTIONS Pneumatic, Electric Motor, Gas-Hydraulic, Manual Gear, Bare Stem

MATERIALS Carbon Steels, Alloy Steels, Stainless Steels

SPLIT BODY BALL VALVES



Vastaş Valf Armatür Sanayi Ticaret Anonim Şirketi

MAIN PLANT

Çerkezköy Organize Sanayi Bölgesi,
2. Cad. No:20-22 Çerkezköy 59500 Tekirdağ TURKEY
T: +90 282 758 36 50 (pbx) F: +90 282 758 36 59

ISTANBUL OFFICE

Perpa Ticaret Merkezi A/Blok Kat:13
No:1977 Okmeydanı Şişli 34384 İstanbul TURKEY
T: +90 212 221 39 81, +90 212 222 42 71, F: +90 212 222 63 59

WEB & EMAIL

<http://www.vastas.com>
vastas@vastas.com



6A-1301 600-0043
6D-0449 602-0035



0036



ISO 9001
032841



ISO 14001
031931



ISO 18001
030063



C-TR.AB.28.B.00292

