



PN250 Acc. to ISO 17292 STANDARD **1500 Class**
FORGED STEEL BALL VALVES
 FLOATING BALL, FULL BORE, SOFT SEATED, FIRE SAFE, ASD

Figure

E605.12



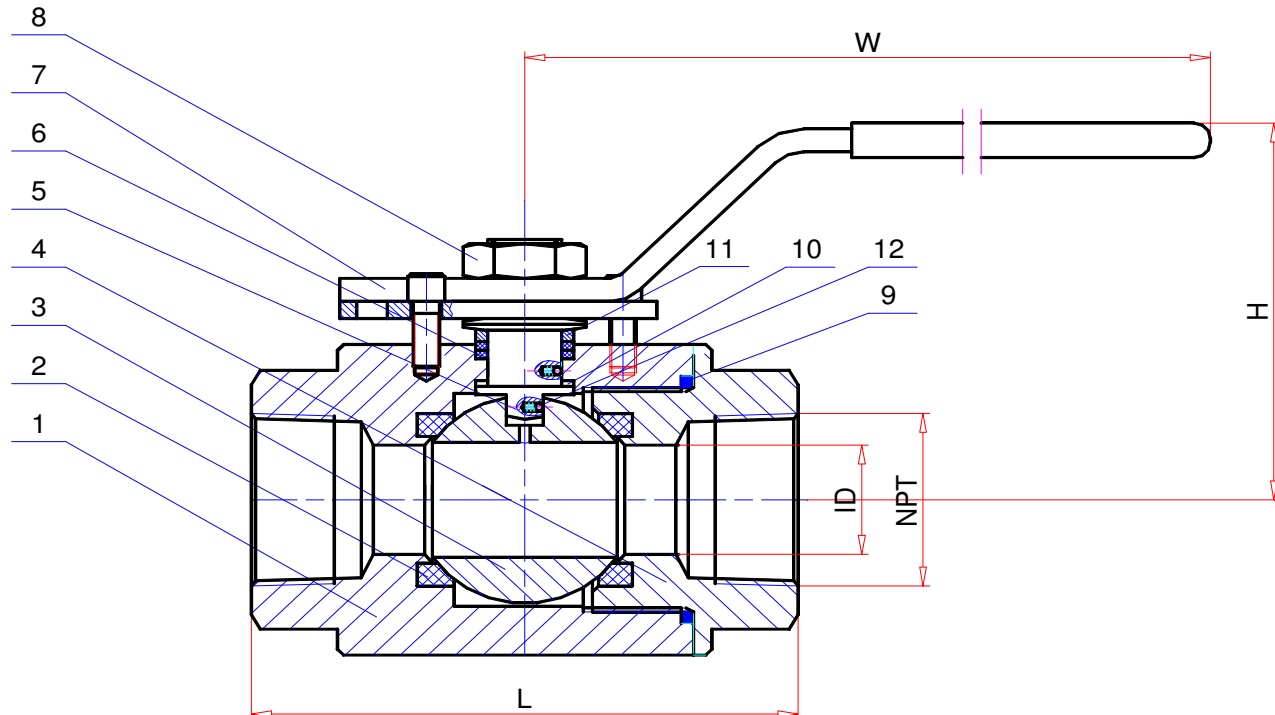
DIMENSIONS & WEIGHT of E605

NPS	DN	ID	L	H	W	Wt
inc.	mm	mm	mm	mm	mm	Kg
1/2	15	12.5	75	65	150	2.5
3/4	20	17	90	72	150	3.7
1	25	23	105	80	170	5.8
1 1/2	40	37	130	105	240	11.5
2	50	49	160	114	240	13.7

	TEST PRESSURE	WORKING PRESSURE
SHELL	384 BAR	-29+100 °C 250 Bar
CLOSURE	282 BAR	

PART LIST for Material No.12

Item	PART NAME	Symb.	material
12	ANTISTATIC DEVICE	SS	SPRING+BALL
11	GLAND	304	ASTM A182 Gr.304
10	STEM SEALING	PTFE	Polytetrafluoroethylene
9	GASKET	GRF	GRAPHITE
8	NUT	2H	ASTM A194 Gr.2H
7	WRENCH	St	STEEL
6	PACKING	GRF	GRAPHITE
5	STEM	304	ASTM A182 Gr.304
4	BODY INSERT	A105	ASTM A105
3	BALL	304	ASTM A182 Gr 304
2	SEAT INSERT	PTFE	Polytetrafluoroethylene
1	BODY	A105	ASTM A105



DESIGN STD.: **ASME B16.34** TEST STD.: **ISO 5208** END TYPE: **NPT (FEMALE)** MAT'L ID.: **A105** TRIM ID.: **304+PTFE**

Prep.K.KORKMAZ	Che.:U.ÖZDEMİR	Apr.:N.ERGIN	Rev.No / Date:R1 / 20.08.2006	Description:	Datasheet Nr.:E605.12	Attach.	Page&Scale:1/1 A4	Origin:DES
----------------	----------------	--------------	-------------------------------	--------------	-----------------------	---------	-------------------	------------