



**PN110** Acc. to ISO 17292 STANDARD **600 Class**  
**FORGED STEEL BALL VALVES Flanged**  
 FLOATING BALL, SOFT SEATED, FIRE SAFE, ASD

Figure

**E603F.12**



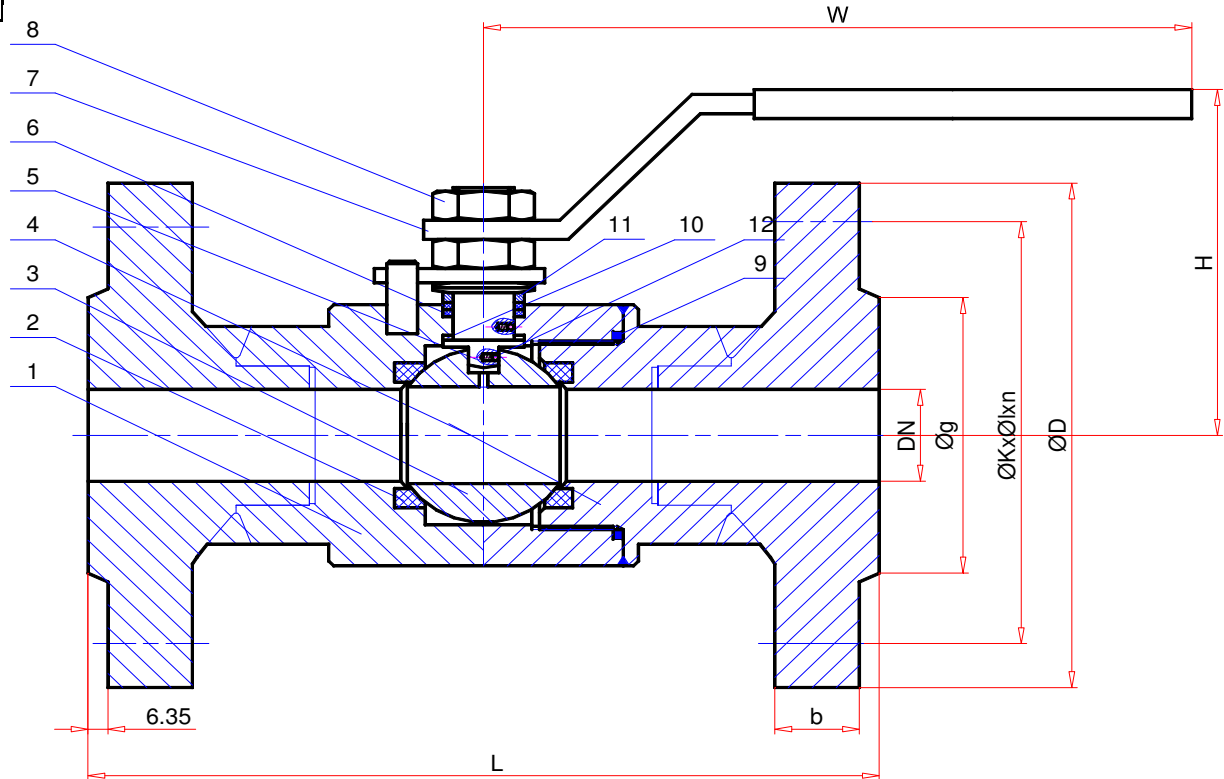
**DIMENSIONS & WEIGHT of E603F**

NPS	DN	ØD	b	g	ØK	n	ØI	L	H	W	Wt
inc.	mm	mm	mm	mm	mm	no	mm	mm	mm	mm	Kg
1/2	15	95.5	14.5	35	66.5	4	16	165	65	150	2.8
3/4	20	117.5	16.5	43	82.5	4	19	190.5	72	150	4.5
1	25	124	17.5	51	89	4	19	216	80	170	6.4
1 1/2	40	155.5	22.5	73	114.3	4	22	241	105	240	11.7
2	50	165	25.5	92	127	8	19	292	114	240	19.5

	TEST PRESSURE	WORKING PRESSURE
SHELL	153 Bar	-29+100 °C
CLOSURE	113 Bar	

**PART LIST for Material No.12**

Item	PART NAME	Symb.	material
12	ANTISTATIC DEVICE	SS	SPRING+BALL
11	GLAND	304	ASTM A182 Gr.304
10	STEM SEALING	PTFE	Polytetrafluoroethylene
9	GASKET	GRF	GRAPHITE
8	NUT	2H	ASTM A194 Gr.2H
7	WRENCH	St	STEEL
6	PACKING	GRF	GRAPHITE
5	STEM	304	ASTM A182 Gr.304
4	BODY INSERT	A105	ASTM A105
3	BALL	304	ASTM A182 Gr 304
2	SEAT INSERT	PTFE	Polytetrafluoroethylene
1	BODY	A105	ASTM A105



DESIGN STD: **ASME B16.34** TEST STD.: **ISO 5208** F to F: **ASME B16.10** END TYPE: **ANSI B16.5 RF-600** MAT'L ID.: **A105** TRIM ID.: **304+PTFE**

Prep.K.KORKMAZ	Che.:U.ÖZDEMİR	Appr.:N.ERGIN	Rev.No / Date:R1 / 20.08.2006	Description:	Datasheet Nr.:E603F.12	Attach.	Page&Scale:1/1 A4	Origin:DES
----------------	----------------	---------------	-------------------------------	--------------	------------------------	---------	-------------------	------------