

b

API 602 STANDARD
COMPACT GATE VALVES 600 Class
 BOLTED BONNET, OUTSIDE SCREWED & YOKE, RISING STEM

Figure

E503F.15



DIMENSIONS & WEIGHT of 503F

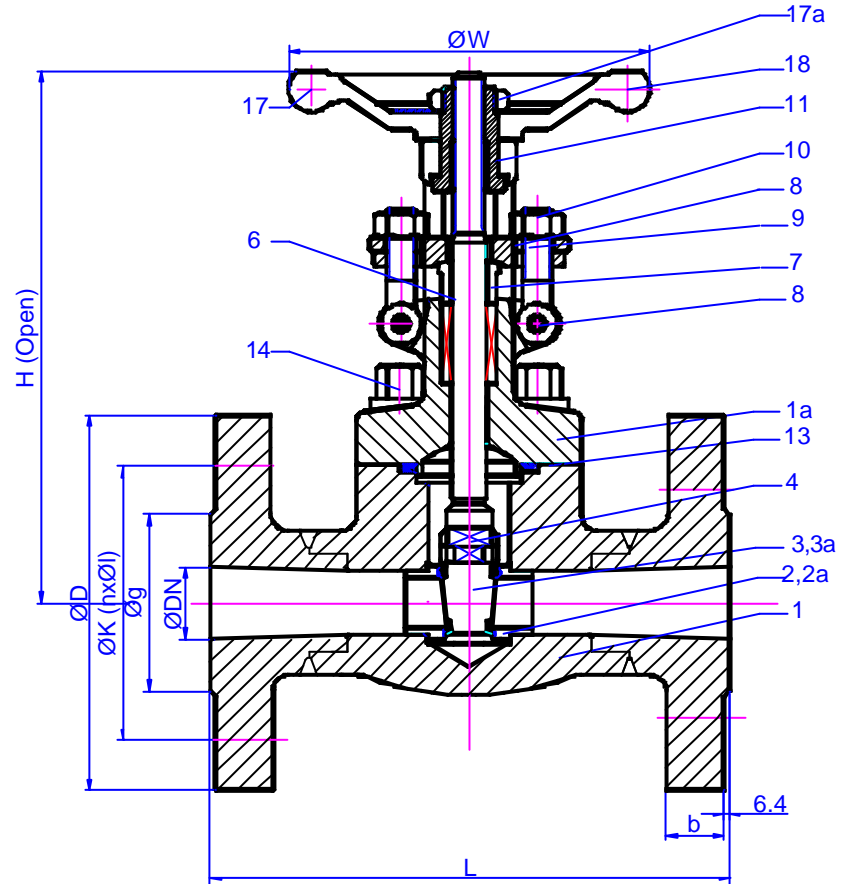
NPS	DN	ØD	b	g	ØK	n	ØI	L	H	ØW
inc.	mm	mm	mm	mm	mm	no	mm	mm	mm	mm
1/2	15	95.5	14.5	35	66.5	4	16	165	165	100
3/4	20	117.5	16.5	43	82.5	4	19	190.5	180	100
1	25	124	17.5	51	89	4	19	216	205	125
1 1/2	40	155.5	22.5	73	114.3	4	22	241	273	160
2	50	165	25.5	92	127	8	19	292	330	180

TEST PRESSURE	
SHELL & BACKSEAT	153 Bar
CLOSURE	113 Bar

WORKING PRESSURE	
-29+38 °C	102 Bar
+425 °C	58 Bar

PART LIST for Material No.15

Item	PART NAME	Symb.	material
1	BODY	A105	ASTM A105
1a	BONNET	A105	ASTM A105
2	BODY SEAT RING	CR13	ASTM A182 Gr.F6
2a	BODY SEAT FACE	STL	AWS 13ER CoCr-A
3	WEDGE	CR13	ASTM A182 Gr.F6
3a	WEDGE SEAT FACE	STL	AWS 13ER CoCr-A
4	STEM	CR13	ASTM A182 Gr.F6
6	PACKING	GRF	GRAPHITE
7	GLAND	410	AISI410
8	GLAND FLANGE	A105	ATSM A105
9	EYE BOLT	B7	ASTM A193 Gr.B7
10	NUT	2H	ASTM A194 Gr.2H
11	STEM BUSHING	416	AISI 416
13	GASKET	SWG	316+GRAPHITE
14	BOLT	B7	ASTM A193 Gr.B7
17	HANDWHEEL	CS	CARBON STEEL
17a	WHEEL NUT	CS	CARBON STEEL
18	NAME PLATE	AL	ALUMINIUM
19a	END COVER	PVC	



DESIGN STD: API 602		TEST STD.: API 598		END TYPE: ANSI B16.5 RF		MAT'L ID.: A105		TRIM ID.: STL	
Prep. H.SENTÜRK	Che.:K.KORKMAZ	Appr.:N.ERGIN	Rev.No / Date:R0 / 05.09.2005	Description:	Datasheet Nr.:E503F.15	Attach.	Page&Scale:1/1 A4	Origin:DES	